

2018 Annual Report

Little Oak Sanctuary



Little Oak
sanctuary

Planting Seeds of Compassion

About LOS

- Providing sanctuary to farmed animals since 2013
- Currently provides sanctuary to 147 farmed animal residents
- Advocates for farmed animals in our community
- Empowers individuals to make informed decisions that align with their own values of compassion and non violence

FUNDING

In providing sanctuary and advocating for animals in 2018, Little Oak Sanctuary acknowledges the support of:

- Animal Guardians Foundation
- Estate Robin Vincent Udny Rothwell Re Wildlife Preservation Trust
- Hummingbird Events
- LUSH Australia
- Merle Carroll Animal Welfare Trust
- Sweet Bones Bakery Café
- Tanemaki Designs
- The Australian Public
- The Pollination Project
- UTS Sydney Vegan Society



CONTENTS

STRATEGIC DIRECTION..... 4

COMMITTEE MEMBERS 5

SANCTUARY REPORT - KATE LUKE7

SANCTUARY REPORT - JAMES LUKE8

CASE STUDIES: TRUCK CRASH CHICKS.....12

CASE STUDIES: CHARLOTTE & PORTIA PIGLETS13

OUTREACH & ADVOCACY14

PROJECTS & UPGRADES.....15

COMMUNITY BUILDING.....16

FUNDRAISING & EVENTS... .17

FUTURE FOCUS.....18

2017-18 FINANCIAL REPORTS..... 19

STRATEGIC DIRECTION



Little Oak
sanctuary

Planting Seeds of Compassion

goal

Little Oak Sanctuary will be a sustainable organisation that provides best practice care to farmed animals and actively advocates for a cruelty free world by:

- Providing improved levels of animal care through improved facilities
- Educating and influencing the community
- Building practices that support and sustain our organisation, animals, people and the planet

vision

A world where animals are persons not property

mission

Little Oak Sanctuary is a not for profit, registered charity that offers sanctuary to animals in need whilst promoting compassion for all animals through education and cruelty free living.

focus

Little Oak will continue the provision of core service delivery activities - providing sanctuary to animals and community education and advocacy

FOUNDING MEMBERS



James Luke

PRESIDENT &
SECRETARY



Kate Luke

VICE PRESIDENT &
TREASURER

COMMITTEE MEMBERS

Tara Ward

COMMITTEE MEMBER

Sarah Taylor

COMMITTEE MEMBER

Lisa Green

COMMITTEE MEMBER

Claerwen Hodge

COMMITTEE MEMBER

CORPORATE VOLUNTEERS AND CONSULTANTS

AUDITOR

Brendan Commensoli

CONSULTANTS

Kaaron Keily - Electrician

CORPORATE VOLUNTEERS

TERADATA

GROUP VOLUNTEERS

UTS VEGAN SOCIETY

AMAROO HIGH DUKE OF EDINBURGH

VOLUNTEERS

During 2018 we had over 40 active volunteers who cleaned shelters, built yards, planted trees, set up for open days, undertook outreach at our stalls and enriched the lives of our residents through the love and care provided. Little Oak Sanctuary is a community and our volunteers

are integral to our work - we would like to thank every single person who helped us out in any capacity during the year,

THANKYOU!





SANCTUARY REPORT KATE LUKE

Our focus remains providing sanctuary to farmed animals and advocacy for all animals

Despite the pressures of operating through drought we made significant progress in many areas

During 2018, we held twelve open days at the sanctuary, with over 240 guests attending.

We maintained our themed approach where each event highlights a particular species and the issues they face, whilst demonstrating some solutions ensuring guests came away feeling empowered and inspired.

Some examples of these are our May 'Respect for Chickens month', at this sanctuary visit guests met 20 seven week old chicks who had survived a truck crash (their story is featured on page 12). A standard tour followed with extra emphasis placed on the poultry. The event wound up with a lunch of vegan quiches, chicken-less pies as we shared how easy it is to make delicious food without using birds.

Another example is our ever popular wine, jazz and vegan cheese event. Guests were treated to an amazing spread of animal friendly cheeses, with special thanks to the talented Jazz musicians, Llewelyn and Lachlan. Special thanks also goes to Damona divine cow cheeses and Artisa for their generous donation of cheeses for the events.

The year saw many new faces at Little Oak Sanctuary, with a total of 65 new animals arriving during 2018.

These were made up of:

- 2 Ducks
- 20 Broiler Chickens
- 6 Roosters
- 28 Hens
- 3 Pigs
- 1 Goat
- 4 Sheep
- 1 Pigeon



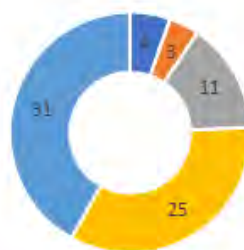
Guests attending our end of year celebration sanctuary visit. Image: Reeni Martinez

During the year we saw 24 animals adopted into loving homes, and the passing of 24 animals, including 3 hens, 1 turkey, elderly donkey Shadow, 18 of the broiler chickens, and Jared the sheep.

We rehabilitated and released 1 Pigeon.

As the year draws to a close, we are providing sanctuary for 147 animals (74 large animals (Sheep, goats, horses, donkeys, cattle & pigs) and 73 poultry & birds (Roosters, hens, geese, ducks, turkeys, peafowl & pigeons), and advocating for millions more.

Large animals



■ Cattle ■ Horses ■ Pigs ■ Goats ■ Sheep

In the 2017-18 financial year, the cost of running Little Oak grew to \$92,098, or around \$8,000 per month.

\$13,000 of these expenses relates to projects that we received grant or other funding to undertake. Our Vet and animal health care costs averaged at just under \$1,657 per month, with animal feed averaging around \$2,138 per month. Our feed figures only continue to increase beyond 1 July 2018 as the drought persists.

These remain the highest areas of expense for Little Oak however we have made considerable savings by buying hay in bulk when it is most affordable, and through our ongoing implementation of high standards of animal care keeping vet expenses to a minimum. Indeed much of our expenditure in this area relates to preventative measures such as desexing, worming, vaccination, hoof and dental care etc.

Our animal care standards continue at a high level resulting in a very low rate of preventable conditions being observed amongst our residents. We strive to continue improving our standards and this will only serve to provide better outcomes for our animals but also minimise our vet or animal health expenses.



We said goodbye to our dear friend Shadow, who at 32 years old passed away surrounded by friends.

SANCTUARY REPORT JAMES LUKE

The ongoing drought has made 2018 a challenging year at Little Oak.



We have faced ever increasing hay costs and sporadic hay and feed shortages from some of our suppliers. Thanks to several fundraising campaigns, we are still managing to keep our feed supplies at a safe level.

The lack of decent rain over the past 24 months has also placed our water supplies under a lot of strain, meaning lots of pumping and carting water to where it's needed on the property.

Our area is experiencing the worst drought conditions that have been seen in over 130 years. There has been little to no grass in our paddocks for most of the year, and as result we are having to provide supplementary feed in the form of hay and pellets.

Not only is the price of hay going up significantly, we are using far more of it than we normally do and it is becoming really difficult to source. It's not uncommon for us to be told there is hay available and then when we turn up there is none left, and we have had several loads ordered for delivery that simply do not show up. We are trying to stay ahead of it as we are completely committed to providing our residents with the best level of care, so this is putting extraordinary pressure on us to undertake almost constant fundraising which is difficult as we also work outside of the sanctuary to fund its operation and our own expenses.

Compared to a normal year, what extra costs do you expect to incur due to the drought (in dollars per month)? Our feed expense has gone from \$13k in 2016-17 to \$25k in 2017-18 and as the drought continued throughout the year these costs have continued to rise. We're currently spending around \$4,000-\$4,500 a month on feed alone.

We've been inundated with requests to take in lambs over winter, and have had some come in who have been severely malnourished. Part of our work is to re-home animals where possible, during the drought this has been almost impossible and people abandoning animals or contacting us to take in their animals has significantly increased. Many sanctuaries are not taking in any large animals and accordingly animals who otherwise would have been helped by sanctuaries are being turned away.

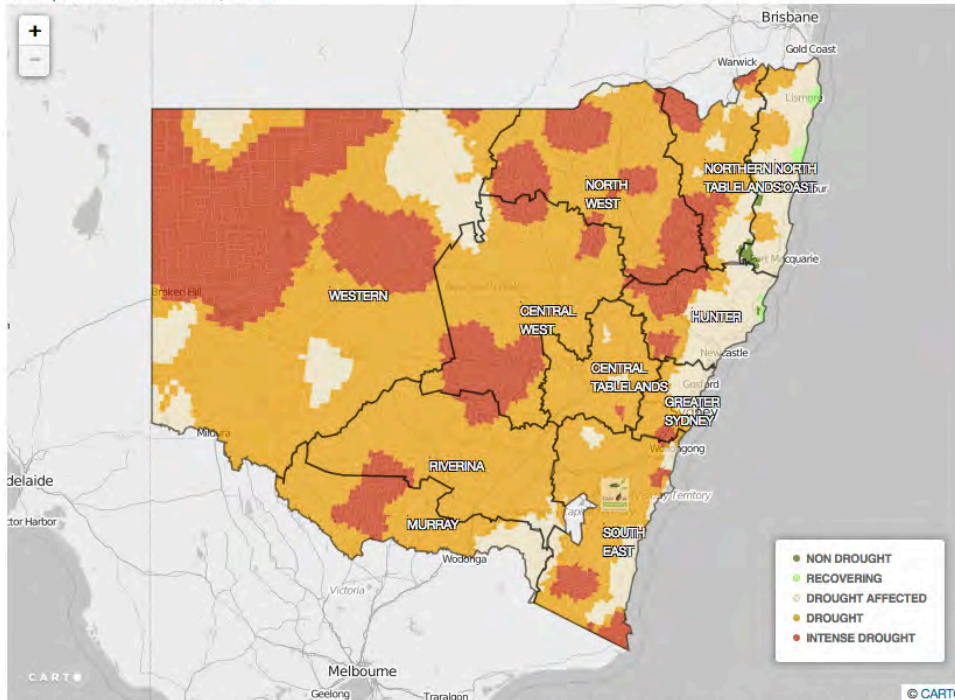
We witnessed the local wildlife really struggle, we saw large numbers of wombats coming out during the day to spend additional time foraging. We have also provided these animals with hay to help support them through. Fortunately we have been gradually taking efforts to make our sanctuary as resilient as possible in the face of climate change as these events are only likely to become more frequent, we purchase additional water tanks each year when funds allow, and are working towards establishing more resilient grasses in our pastures.

Some heavy rain in November and early December combined with earlier pasture improvement works means we have had some grass growth of late, but it will probably not continue once the temperatures rise into the 30's. It still has helped immensely and all of the residents are enjoying exploring the green grass.

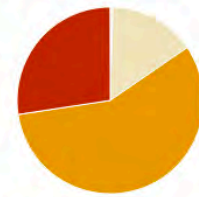
Future plans are to purchase more tanks and troughs as well as continuing to work on improving the resilience of our property. We have been addressing soil balance after having several paddocks tested, and we continue to work on establishing more drought hardy pastures. This will hopefully ease the strain of future droughts.

We've included some information about drought conditions in our region in the report to help people understand the conditions that actually classify what drought is.

Last updated on 16/12/2018, 12 AM



NSW Summary



● Non Drought: 0.2 %
 ● Recovering: 0.3 %
 ● Drought Affected: 15.4 %
 ● Drought: 57.1 %
 ● Intense Drought: 27.4 %

CDI = Combined Drought Indicator. RI = Rainfall Index. SWI = Soil Water Index. PGI = Pasture Growth Index. DDI = Drought Direction Index

Little Oak Sanctuary is located in an area that is currently classified as being in "Drought" phase. This means that at least one indicator is below the 5th percentile, this is a more severe classification of drought than "drought affected".

According to the DPI, the recommended action for farmers in these conditions is:

- Destock.
- Retain breeders stock if possible.
- Hand feed core breeders.
- Cart water.
- Use Farm Management Deposits.
- Organise bank debt mediation.
- Engage with support services.
- Undertake fire risk planning.

Sanctuaries often provide lifetime care to their animals, as many have wound up seeking sanctuary as there are no other safe options for them. As drought conditions worsen sanctuaries face greater pressure to take animals on from those who are unable to keep caring for their animals - most of whom will be turned away due to no capacity for us to provide care for them.

As registered charities sanctuaries must face the burden of droughts without any assistance from banks or the government, there is no eligibility for charities in most drought relief funds, these are directed solely to farmers.

Sanctuaries face the emotional stress of seeking funds to buy feed for animals in their care, the added stresses of actually sourcing feed that has become quite scarce, additional travel time collecting feed which is being rationed by feed stores, carting water to animals, combined with the ongoing stress of turning away animals in need due to reduced capacity to feed and care for them.

We have provided further breakdown of how the Department of Primary Industry's drought classifications are calculated and exactly where we, at Little Oak Sanctuary, fall within the ranking of each index that is used to formulate this classification.



CDI Phase	Technical definition	Description - typical field conditions
Intense Drought	All three indicators (rainfall, soil water, plant growth) are below the 5 th percentile	Ground cover is very low, soil moisture stores are exhausted and rainfall has been minimal over the past 6-12 months.
Drought	At least one indicator is below the 5 th percentile	Conditions may be very dry, or agronomic production is tight (low soil moisture or plant growth). It is possible to be in Drought when there has been some modest growth, or a few falls of rain.
Drought Affected (intensifying)	At least one indicator is below the 30 th percentile and the rainfall trend is negative over the past 90 days.	Conditions are deteriorating; production is beginning to get tighter. Ground cover may be modest, but growth is moderate to low for the time of year. When indicators are close to the Drought threshold drought conditions are severe.
Drought Affected (weakening)	At least one indicator is below the 30 th percentile and the rainfall trend is positive over the past 90 days.	Production conditions are getting tighter, but there have been some falls of rain over the past month. It is rare to enter the Recovering phase from the Non-Drought category; Usually there is a quick (1-2 week) transition into Drought Affected or Drought. When indicators are close to the Drought threshold drought conditions are severe.
Recovering	All indicators are below the 50 th percentile but above the 30 th percentile	Production is occurring but would be considered 'below average'. Full production recovery may not have occurred if this area has experienced drought conditions over the past six months.
Non-drought	At least one indicator is above the 50 th percentile.	Production is not limited by climatic conditions.

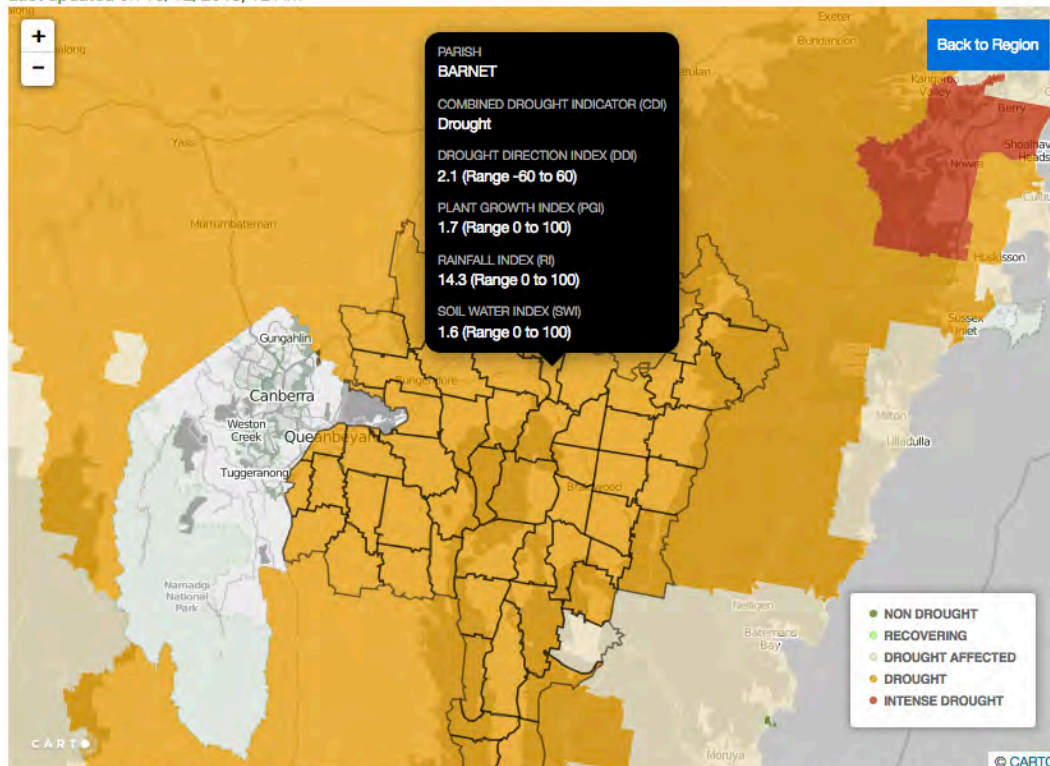
NSW Department of Primary Industries



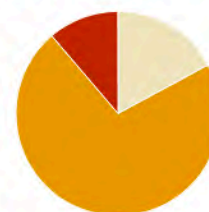
Whilst rainfall has been slightly above average towards the end of 2018, higher than average forecast temperatures mean that the drought conditions we have faced during the year are likely to continue.

It is evident we are still significantly impacted by the drought and we are likely to see the effects of this for years to come.

Last updated on 16/12/2018, 12 AM



South East Summary



● Non Drought: 0.0 %
 ● Drought Affected: 17.2 %
 ● Drought: 71.6 %
 ● Intense Drought: 11.2 %

CDI = Combined Drought Indicator. RI = Rainfall Index. SWI = Soil Water Index. PGI = Pasture Growth Index. DDI = Drought Direction Index

Drought Direction Index: Scale -60 to +60 | Our rating December 2018: **+2.1**

The DDI is a categorical index that tracks the trend in meteorological conditions over the last 200 days. If the DDI signals a drying trend (DDI negative), and the other indicators are below the 50th percentile, a drought warning is issued.

Plant Growth Index: Scale 0 to 100 | Our rating December 2018: **1.7**

The PGI is calculated using the same general procedure as the RI, using the output from DPI's crop and pasture models. Crop stress and pasture growth data are taken from DPI AgriMod, and the percentile rank calculated for each day. If the predominant land use in a given area is cropping, the PGI uses the crop-derived data, otherwise it uses the pasture growth indicator. The PGI is an agronomic drought index which is not only sensitive to moisture but also temperature variation and seasonal events such as frost.

Rainfall Index: Scale 0 to 100 | Our rating December 2018: **14.3**

The RI is the percentile rank of rainfall aggregated over 12 months. The ranking is made using a 30 year (1980-2010) baseline which captures recent big shifts in climate variability, and factors in climate change. This provides an index between 0 and 100 where values approaching 0 are close to driest, and those approaching 100 close to the wettest, for any given region.

Soil Water Index: Scale 0 to 100 | Our rating December 2018: **1.6**

The SI is calculated using the same procedure as the RI, but uses a soil moisture field derived from the DPI AgriMod soil water balance. Plant available soil water from layer one (0-10cm) and layer two (11-45 cm), the assumed maximum rooting zone, are aggregated and used to calculate the SWI. Similar to the RI, the SWI is an index between 0 and 100. In most districts of NSW a value of 0 means there is no plant available water held in the profile.

CASE STUDY | BROILER TRUCK CRASH

108,000 day old chicks involved in truck roll accident near Yass, NSW

On Easter Monday, 2018, 108,000 little chickens emerged from their eggs. Almost immediately they were loaded onto a truck headed for a huge shed. Here they were scheduled to spend the next 5-6 weeks of their lives before being trucked once again, this time to their slaughter.

On route to the shed, the truck carrying them left the road, crashing in a paddock (images of crash scene follow below, please beware of distressing images). Thousands of chicks lay strewn and dead whilst thousands more who survived the crash peeped frantically, seeking the comfort of a mother they would never know.

Around 80,000 chicks were collected at the crash scene and reloaded for delivery to the sheds they had originally been bound for - those chicks would have been sent off for slaughter 6-7 weeks later.

Members of the public who had been visiting Little Oak Sanctuary decided to drive past the crash site on their way home. Although the site had been reported as cleared of chicks, our friends were shocked and horrified to find hundreds of live chicks left at the site, pushed into piles of rubble and in some instances buried alive. They spent several hours recovering all the surviving chicks, who then went into expert care for several weeks at A Poultry Place.

Having recovered somewhat from the trauma of that first day of their lives, at eight weeks old the babes were strong enough to leave care and we lovingly welcomed 20 of these souls to Little Oak. These little guys received the best of care, however having been bred to grow so incredibly big so very quickly, their lifespan will not be as long as other chickens. Every day these little birds are able to forage, dust bathe, run and flap their wings is a day we are grateful for. Sadly over the course of the year, all but two of the 20 who came to Little Oak have now passed. We thank the amazing individuals who rescued these sweet babies and the wonderful human of A Poultry Place for providing such wonderful care for them in the early critical weeks of their life after this horrible accident.



CASE STUDY | CHARLOTTE

Even the best of intentions can often lead to dire situations for vulnerable animals

Charlotte was born in early September 2018 on a pig farm near Inverell. The pig farmer who was shutting down his business was trying to get rid of the last of his pigs. A young man visiting family came across this situation and as the farmer suggested the piglets throats were to be slit if no-one took them, he took one piglet back to his fathers rental property in an inner Sydney suburb. Although he had the best of intentions, the young man was poorly equipped to cope with a very young, vulnerable piglet. As a result, poor Charlotte did not receive the best of care. Left in the rain with nowhere to escape from the wet and fed inappropriate food, she soon developed a chest and skin infection. The family sought vet care for her but many city vets would not treat her, they searched and searched until they finally found one who would. After a week of treatment Charlottes' skin was improving but it took many more weeks of medication once she arrived at the sanctuary to resolve her ongoing skin issues and chronic lung condition. As Charlotte is the breed of pig used in commercial pig farming, she is likely to grow into a very big girl, around 250kg or so, a long way from the 6 kilo piglet she was on arrival. Charlie is a powerhouse of a personality, she is now safe in sanctuary where she will continue to advocate for her kind.



Charlotte on arrival (above left) and two months later (right)

CASE STUDY | PORTIA

Pig in the City

Portia was also born on 2nd September, 2018, on a different type of pig farm than most people might imagine - one that breeds so called "miniature" pigs. Portia was purchased from the breeder without much research having been undertaken into the reality of living with a pig - although she was very well cared for and loved, her family did not check whether their council allowed people to keep pigs (they don't, many do not), their inner Sydney city neighbours started threatening to harm the tiny piglet. The city is no place for a pig! Portia is indeed a smaller breed of pig than those used in commercial piggeries, but there are

no true miniature pigs in Australia - she will still likely grow to 150kg.



We are constantly asked to take in pigs from this kind of situation - and we want to take this moment to once again stress that a pig, like any companion animal, is a commitment for their lifetime. Your living arrangements may change, your work commitments may change, you may have health issues, these things are all a part of life and somewhat unavoidable - but animals in our care rely on us - if you do not have solid back up arrangements in place, please think twice before taking on any animal, especially a pig.

OUTREACH & ADVOCACY

Advocating for farmed animals is an integral part of our work.

This year we held more open days and attended more festivals & markets than we have in any prior year.

During the year we held stalls at:

- The Earth Festival
- Kingston Bus Depot Markets x 2
- The Living Green Festival & Twilight Markets
- The Cruelty Free Festival
- World Vegan Day
- Sydney Vegan Markets x 8
- Dickson Shops bakesale & outreach stall x 4

These stalls allowed us to reach thousands of people from different demographics, growing our support base, sharing our message and planting seeds of compassion.

At the time of writing this report, we have over 8,200 facebook supporters, and had a 15% rate of growth in the 2017-18 financial year. Although this is a strong increase, it falls short of our targeted rate of 20% growth, highlighting the need to firm up our social media strategy for future years.

We upgraded our website in late 2018, we will continue improvements to it over the year to come. During the year our website had 43,583 page views with 87.3% of visitors to our site being new. This is an increase of 2,009 page views on 2017's figures of 41,574 page views and 80.6% site visitors being new visitors to the website.

This shows that despite our smaller increase in social media following, our website continues to attract more visitors. Considering we moved to a new website late in the year and our web content has not been completely updated this is a very positive achievement.

We produced one new booklet, partially funded by a grant from The Pollination Project. This booklet focuses on goats.

Our series of booklets continue to be well received by the public and we will continue to produce more in the same series, we are still working on a booklet about horses.

In 2019 we will attend the markets and festivals we have found to be worthwhile in terms of fundraising and outreach.



Our new Goat booklet | Volunteers Massimo & Marley helping out on a Little Oak Stall at Sydney Vegan Markets



Our upgraded website was launched in late 2018

PROJECTS & UPGRADES



Volunteer Kaaron harrowing the paddocks in our 57 year old Chamberlain Tractor

Little Oak continues to build infrastructure and improve the land to build resilience and sustainability

Off Grid Solar Kit

Thanks to a successful Perpetual Impact grant application, we were able to have an off grid solar electricity system installed at the sanctuary Hub.

This now provides power to our stables, pumps for water, and the Sharing Shed.

This is a fantastic result that will have ongoing positive impact on our work - and with a solution that is sustainable and earth friendly we couldn't be happier.

Education Centre

Our March open days saw the launch of our education centre, The Sharing Shed!

Work continues on the internal fit out but the centre now provides a hub for education and sharing stories of our residents and the issues they have faced in their lifetimes.

In late 2018 we were successful in a Charity Pot grant application with LUSH to fund a deck and ramp for the Sharing Shed, this will ensure access to all is possible.

We will be commencing work on the deck and ramp in late 2018 into early 2019.

Property Maintenance

Our major fundraising campaign focuses on allowing us to undertake a



large amount of fencing, meaning more of our property would be able to be used for our residents. Unfortunately due to the incredibly high cost of hay due to the drought our fencing plans have had to be scaled back.

We have however managed to undertake an upgrade of fencing in the hub area, and will be continuing with the planned fencing gradually as we are able to.

James has undertaken significant soil improvement measures across the property after soil testing revealed some imbalances.

We are continuing our plans to improve pasture resilience, this will be an ongoing project.

Poultry facilities upgrade

During 2018 we completed the construction of a new, 3 yard poultry facility, around 100m x 30m in dimension.

These yards now house around 30 hens and 8 roosters, with one yard left vacant to rest, allowing us to rotate the birds.

The Teradata team returned again in 2018, this year supplying us with a number of native shrubs and planting them in the new yards.



Teradata Corporate volunteering group

Lamb Foster Care Program

In order to allow us to help more orphaned lambs, we started a foster care program in late 2018. This means that even with our outside work commitments, if we have capacity we will be able to take in more lambs. Artorius was the first lamb through this program and he is now at the Sanctuary having been given a wonderful start to life by his foster care family.





James and Kate at the Hummingbird Events Charity Drought Relief Gala 2018

COMMUNITY BUILDING

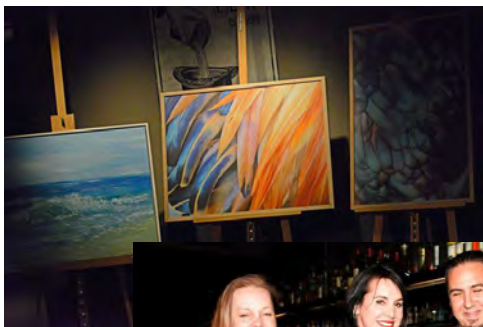
2018 saw Little Oak come together with other local sanctuaries to help support each other through the ongoing drought.

Hummingbird Events was created when two local sanctuaries came together to help other sanctuaries who were significantly impacted by the ongoing drought. Sanctuaries provide lifetime care for many of their animals, are run by volunteers and do not receive any government assistance, and in time of drought the emotional toll as well as the financial toll can be tremendous.

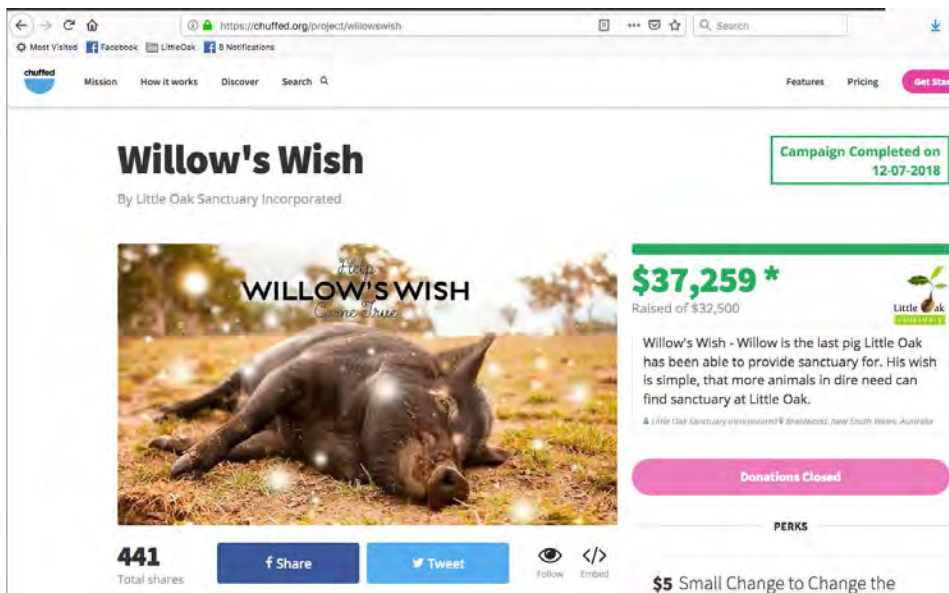
In order to raise much needed funds for, and the spirits of local sanctuaries, we held a fundraising charity gala at Lucky's Speakeasy in the heart of Canberra city.

A live band provided wonderful music, and we were treated to two messages of support delivered via video, one from the amazing Lyn White of Animals Australia, and the other a personal message for A Poultry Place's Bede, from a member of his favorite band The Fizz.

It was a heart warming, soul nourishing night, that really demonstrated the support that sanctuaries have from the local community. We also raised \$8140 which was split evenly across six local sanctuaries.



2018 FUNDRAISING



Our major fundraising campaign in 2018 set a target of \$32,500. This target was sought to enable us to create additional paddocks with new fencing, secure our feed requirements through a bulk purchase of hay, improve our soils and manage our pastures to ensure a sustainable future for the Sanctuary.

Amazingly, we exceeded our target, raising \$37,259 with the support of 172 donors, including a major gift of \$15,000 from the Animal Guardians Foundation.

The drought hit hard not long after our major fundraising campaign and this resulted in the majority of funds raised being used for the purchase of hay (which has risen in price from \$12 a bale to \$25 for small squares of lucerne), although we have managed to make some progress on fencing and soil improvements as well, these areas have not progressed as much as we had hoped when we planned the campaign.

In 2018 we were successful recipients of several grants, including a grant through Perpetual which allowed us to install an off grid solar kit with batteries.

This was a significant achievement towards our goal of sustainability and will have ongoing benefit for the sanctuary.

We will continue to seek grant funding where we find opportunities that match our focus and planned projects.



Willow's Wish Campaign donor Sue and her friends enjoying a VIP visit to the sanctuary as a perk for her contribution to the campaign.

FUTURE FOCUS

STRIVE TOWARDS SUSTAINABILITY

A major priority for Little Oak is to be a sustainable organisation. We will continue making improvements to build the resilience of our organisation and our property, and to lessen our impact on the earth.

FURTHER DEVELOP OUR EDUCATION PROGRAM

Our education program, framed around empathy, continues to be a focus as we refine what has been developed to date.

REFINE OUR SANCTUARY VISIT PROGRAM

Having grown our sanctuary visits from 6 to 12 per year, we look to refine the structure and content of our events.

UPSKILL OUR VOLUNTEER COMMUNITY

In 2018 our major focus regarding volunteers will be to upskill our existing pool of wonderful volunteers. This will ensure ongoing sustainability of the organisation and also ensure we can provide the best level of care to our growing number of residents



INDEPENDENT AUDITOR'S REPORT FOR THE LITTLE OAK SANCTUARY INCORPORATED

Report on the Financial report

We have audited the accompanying financial report, being a special purpose financial report, The Little Oak Sanctuary Incorporated, which comprises the balance sheet and income statement as at 30 June 2018, a summary of significant accounting policies and other explanatory notes and the statement by members of the committee.

Committee's Responsibility for the Financial Report

The committee of the Association is responsible for the preparation of the financial report that gives a true and fair view in accordance with Australian Standards and for such internal control as the directors of the Association determine is necessary to enable the preparation of the financial report that is free from material misstatement, whether due to fraud or error. In Note 1 the committee also states that the report satisfies the financial reporting requirements of the Associations Incorporation Act 1991 (ACT)

Auditors Report

Our responsibility is to express an opinion on the financial report based on our audit. We have conducted our audit in accordance with Australian Auditing Standards. These Auditing Standards require that we comply with relevant ethical requirements relating to audit engagements and plan and perform the audit to obtain reasonable assurance whether the financial report is free from material misstatement.

An audit involves performing procedures to obtain audit evidence about the amounts and disclosures in the financial report. The procedures selected depend on the auditor's judgement, including the assessment of the risks of material misstatement of the financial report, whether due to fraud or error. In making those risk assessments, the auditor considers internal control relevant to the entity's preparation and fair presentation of the financial report in order to design audit procedures that are appropriate in the circumstances, but not for the purpose of expressing an opinion on the effectiveness of the entity's internal control. An audit also includes evaluating the appropriateness of accounting policies used and the reasonableness of accounting estimates made by the committee, as well as evaluating the overall presentation of the financial report.

We believe that the audit evidence we have obtained is sufficient and appropriate to provide a basis for our audit opinion.

Independence

In conducting our audit, we followed the independence requirements of Australian professional ethical pronouncements.

Auditors Opinion

In our opinion, the financial report of Little Oak Sanctuary Incorporated is in accordance with the Association's Incorporation Act 1991 (ACT) including:

- (a) Giving a true and fair view of the Association's financial position as at 30 June 2018 and of its performance for the year ended on that date: and
- (b) Complying with Australian Accounting Standards (including the Australian Accounting Interpretations) and the Associations Incorporation Act (ACT)

Basics of Accounting and Restrictions on Distribution and Use

Without modifying our opinion, we draw attention to Note 1 to the financial report, which describes the basics of accounting. The financial report has been prepared by the committee for the members of the Association. As a result, the financial report may not be suitable for any other purpose. Our report is intended solely for The Little Oak Sanctuary Incorporated.

Brendan Comensoli



Principal

17 December 2018

Little Oak Sanctuary Incorporated

ABN 13 957 855 464

ANNUAL FINANCIAL REPORT

FOR THE YEAR ENDED 30 JUNE 2018

CONTENTS

Profit & Loss Statement

Balance Sheet

Little Oak Sanctuary Incorporated

GPO Box 2116
Canberra ACT 2601

Profit & Loss Statement

July 2017 through June 2018

Income	
Grant & Project Income	\$20,615.24
Donation/Gift Income	\$54,590.26
Merchandise Sales	\$17,075.19
Event Income (OpenDays etc)	\$9,056.50
Raffle Income	\$4,551.00
Total Income	<u>\$105,888.19</u>
Cost of Sales	
Merchandise Costs	\$12,251.81
Total Cost of Sales	<u>\$12,251.81</u>
Gross Profit	<u>\$93,636.38</u>
Expenses	
Animal Expenses	\$53,760.16
Office Expenses	\$6,139.06
Land Management Costs	\$6,719.72
Grant & Project Expenses	\$13,285.21
Event/Outreach Expenses	\$5,732.02
Volunteer Expenses	\$2,917.97
Depreciation Expenses	\$1,000.00
Motor Vehicle Expenses	\$1,327.20
Insurance Expenses	\$1,217.24
Total Expenses	<u>\$92,098.58</u>
Operating Profit	<u>\$1,537.80</u>
Other Income	
Other Expenses	
Net Profit / (Loss)	<u><u>\$1,537.80</u></u>

Little Oak Sanctuary Incorporated

GPO Box 2116
Canberra ACT 2601

Balance Sheet

July 2017 through June 2018

Assets		
Current Assets		
Bank Accounts		
LittleOakSanctuary	\$31,091.97	
Paypal account	\$1,193.28	
Petty Cash/Cash On Hand	\$100.00	
Total Bank Accounts		\$32,385.25
Other Current Assets		
Trade Debtors	\$147.50	
Total Other Current Assets		\$147.50
Total Current Assets		\$32,532.75
Non-Current Assets		
Motor Vehicles		
Mot Vehicles & Trailers @ Cost	\$5,000.00	
Accum. Depr. Motor Vehicles #1	-\$2,000.00	
Total Motor Vehicles		\$3,000.00
Total Non-Current Assets		\$3,000.00
Total Assets		\$35,532.75
Liabilities		
Current Liabilities		
Other Current Liabilities		
Income Received in Advance	\$22,455.00	
Total Other Current Liabilities		\$22,455.00
Total Current Liabilities		\$22,455.00
Total Liabilities		\$22,455.00
Net Assets		\$13,077.75
Equity		
Retained Earnings	\$11,539.95	
Current Year Surplus/Deficit	\$1,537.80	
Total Equity		\$13,077.75